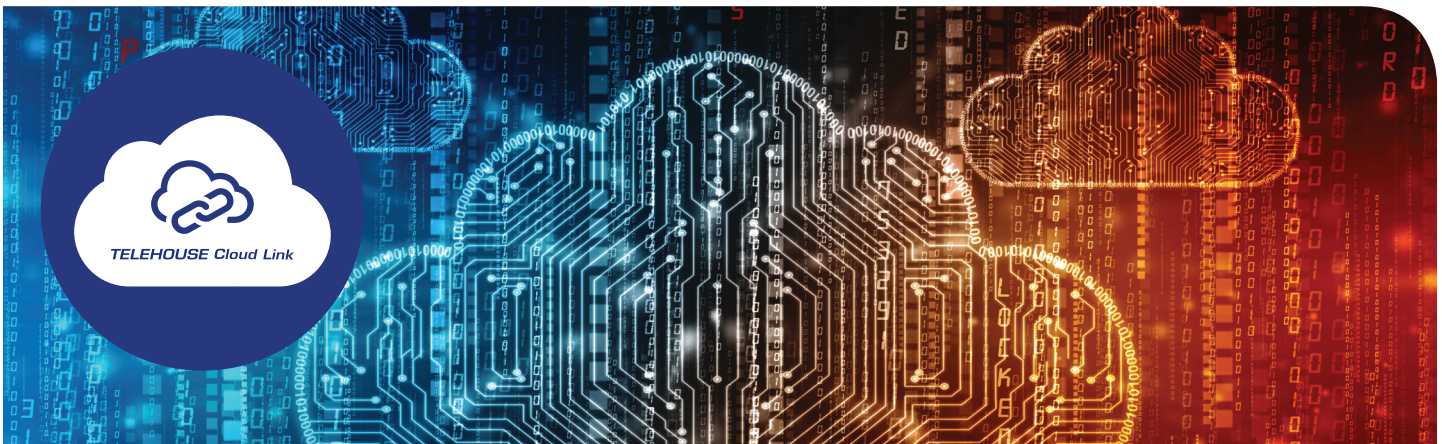


# Telehouse Cloud Link

**Connecting to multiple clouds  
has never been easier**



## Your Partner For Access Into The Cloud

Telehouse Cloud Link is a multi-cloud connectivity exchange that allows enterprises to manage access to multiple cloud services through a single, secure, private connection. Cloud Link helps customers simplify their hybrid cloud infrastructure and speed up data transfer between their network and cloud services.

As the telecommunication landscape is shifting towards cloud based services, we at Telehouse pride ourselves on the ability to simplify, secure and speed up data transfer between your network and your cloud services. Through a dedicated online portal, customers can seamlessly provision virtualised private direct connections over a scalable and secure network. Telehouse not only offers the performance, but also the flexibility of a range of bandwidth options and contract terms.

## Key Benefits



### Multi-Cloud

Access multiple Cloud providers through a single connection



### Maximum Uptime

Cloud connections are fully redundant and Telehouse offer colocation uptime SLA's of 99.999%



### Guaranteed Bandwidth

Bypass the internet for a more predictable service - scale bandwidth as your business demands



### Seamless

The dedicated online portal allows you to seamlessly procure and manage access to Cloud providers in real time



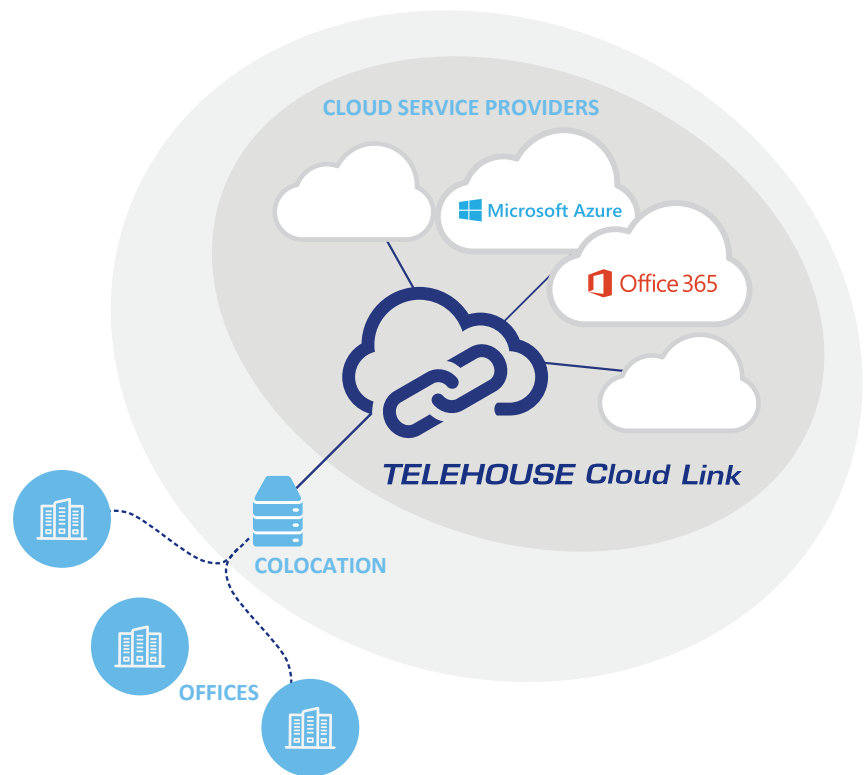
### Private and Secure

Direct, private and secure connections to Cloud providers providing peace of mind

## Telehouse Hybrid Cloud Enablement

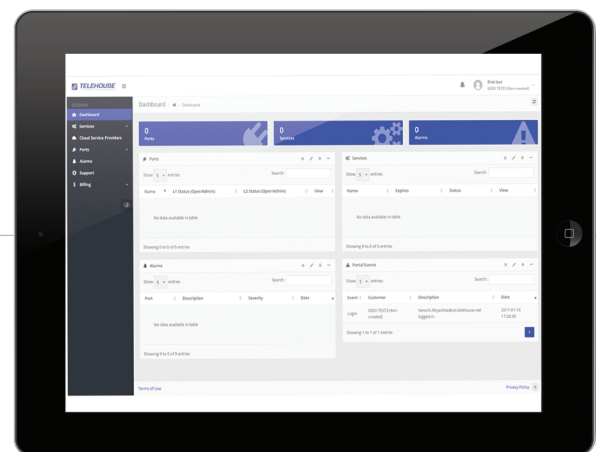
### What it can do for you:

Telehouse Cloud Link offers end-to-end connectivity solutions that simplify, secure, and speed up your cloud networking and last mile requirements, globally.



## Technical Specifications

<b>Media Type</b>	Single Mode Fibre
<b>Port Rates</b>	1G 1000BaseLX 10G 10GBase-SR/LR
<b>Vlan Bandwidth</b>	50Mbps, 100Mbps, 200Mbps, 300Mbps, 400Mbps, 500Mbps, 1Gbps
<b>Trunking</b>	802.1Q (Native VLAN Not Supported)
<b>Resilience</b>	Dual port connectivity
<b>Monitoring</b>	RX and TX port utilisation Per service monitoring: <ul style="list-style-type: none"> <li>• near and far end frame loss</li> <li>• latency</li> <li>• jitter</li> <li>• ingress traffic</li> </ul>



**Dedicated  
online  
portal**

### Contact us:

T: +44 (0) 207 512 0550

E: sales@uk.telehouse.net

For more information visit: [www.Telehouse.net/Cloud-Services/Cloud-Link](http://www.Telehouse.net/Cloud-Services/Cloud-Link)

